



European
Commission

EUROPEAN CARE STRATEGY

3 October 2022

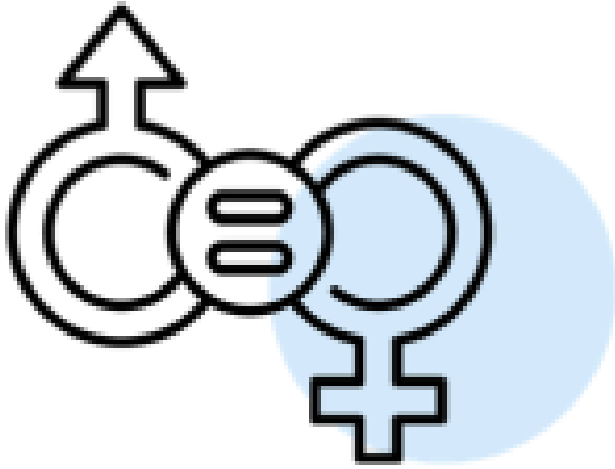


#EUCareStrategy

*Employment,
Social Affairs
and Inclusion*

The gender dimensions in care

- Women make up **90%** of the **workforce in care**.
- Almost all women (**92%**) in the EU are **regular carers** and **81%** are **daily carers**, compared to **68%** and **48%** of men respectively.
- **Unpaid care responsibilities** keep **7.7 million** women out of the labour market, contributing to the **gender employment, pay and pension gap**.
- **Women** are more likely to need **long-term care** but are less able to afford it.



The Care Package

Communication on the European care strategy

**Proposal for a Council
Recommendation on the
revision of the Barcelona
targets**

**Proposal for a Council
Recommendation on access
to affordable high-quality
long-term care**

Proposal for a Council recommendation on the revision of the Barcelona targets

Revision of the Barcelona targets

Quality, accessibility and affordability

Staff working conditions

Gender Care Gap

Governance, data collection, monitoring and reporting

Proposal for a Council Recommendation on access to affordable high-quality long-term care

Adequacy of social protection, availability and quality

Carers (formal and informal carers)

Governance, monitoring and reporting

Annex with quality principles

Staff Working Document with analytical underpinning

Thank you



ec.europa.eu/social



Social Europe



EU_Social

#EUCareStrategy