



RESISTIRÉ

The Europe of Tomorrow
European National Recovery and Resilience Plans
Prague 3 October 2022

Sofia Strid, PhD., Associate Professor, Örebro University, Sweden, Scientific Coordinator of RESISTIRÉ
Roberto Cibin, PhD., Postdoctoral Researcher at The Institute of Sociology of the Czech Academy of Sciences
Marcela Linková, PhD., Head of the Centre for Gender and Science at The Institute of Sociology of the Czech Academy of Sciences



This project has received funding from the European Union's Horizon 2020 research and innovation programme under grant agreement no. 101015990



RESISTIRÉ



The evidence base

RESISTIRÉ: Responding to outbreaks through co-creative inclusive equality strategies

1. Understand the impacts of covid-19 policy and societal responses on inequalities.
2. Design and pilot solutions to mitigate impacts.
3. Empower policymakers to change the negative impacts of COVID-19 policy responses on social and economic inequalities.

EUH2020 research and innovation project
Implemented in 31 countries
Nine European partners, coordinated by the ESF
30 project months
5 million euro

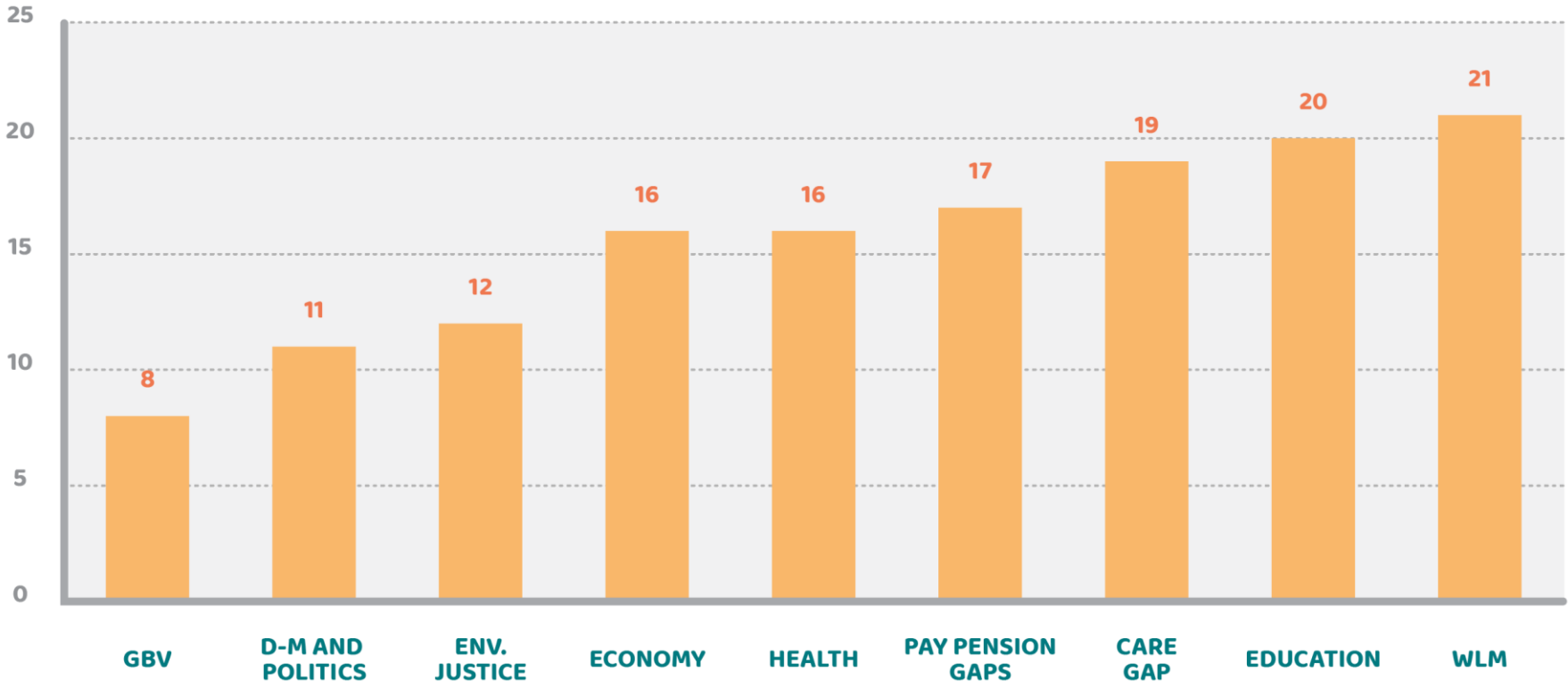
Data collection in 31 countries; combining quantitative, qualitative and policy analysis:

- Policy analysis: 300 policies; 300 societal responses, 27 NRRPs
- Quant: 500 Rapid assessment surveys
- Qual: 900 interviews; 14 pan-European public authority and expert workshops

Gender equality and domains

INCLUSION OF GENDER EQUALITY DOMAINS IN NRRPs (N=26)

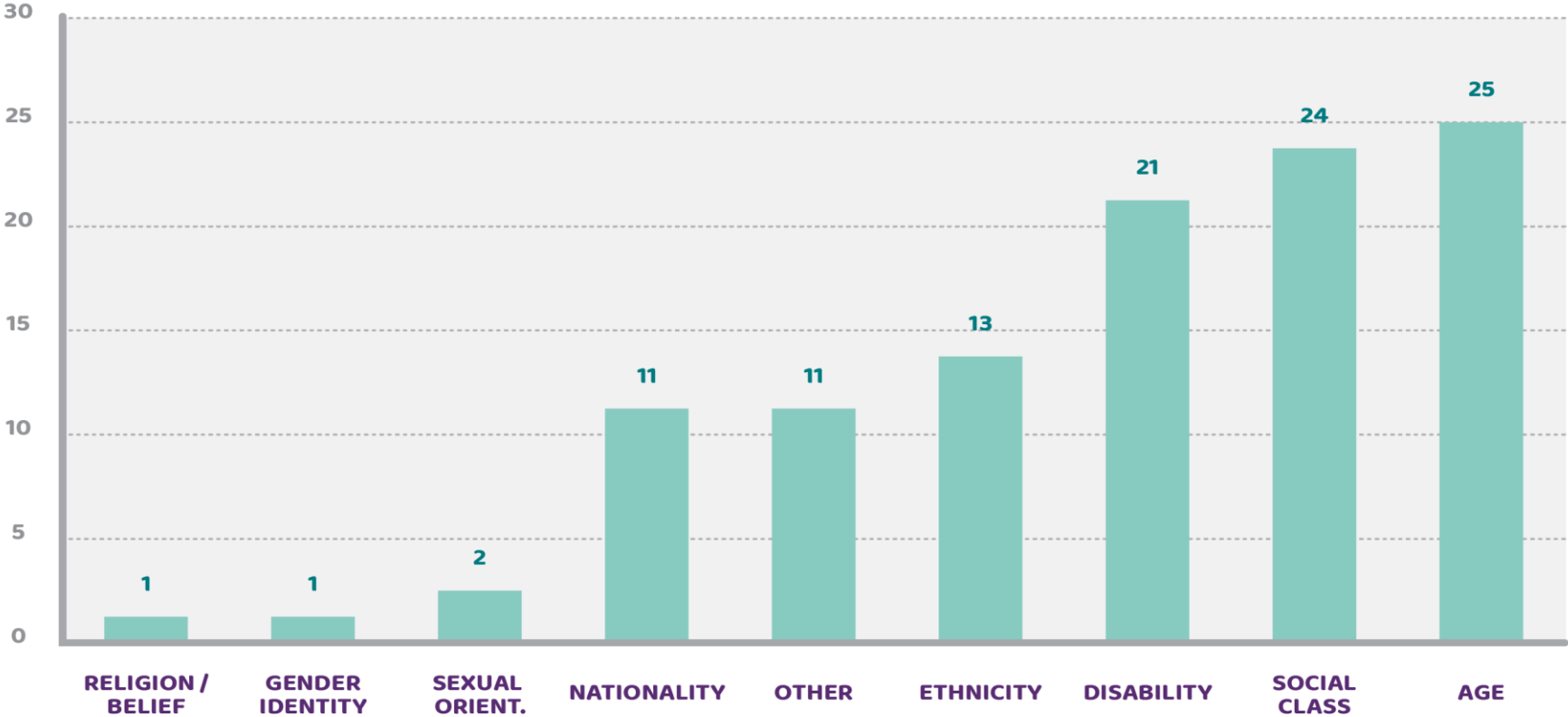
PLANS MENTIONING EACH DOMAIN (N = 26)



Gendered inequalities/intersectionality

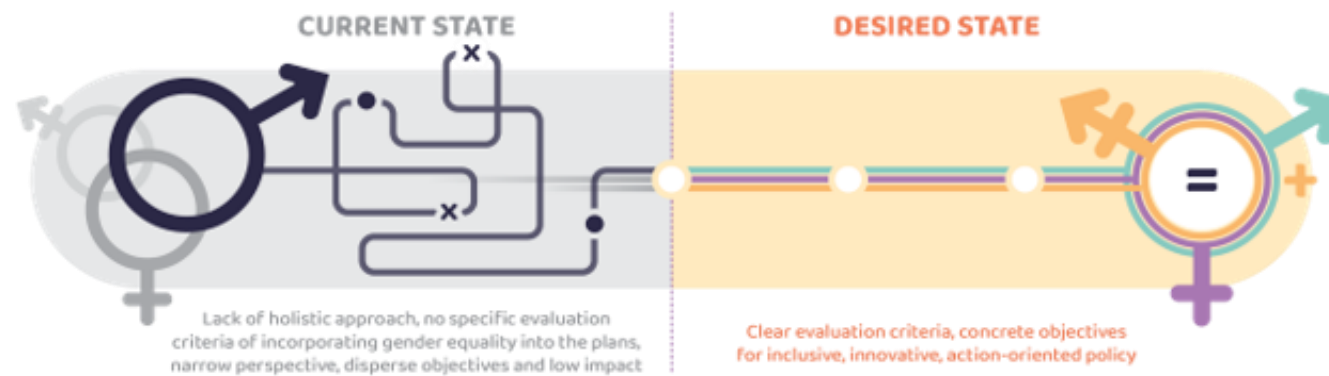
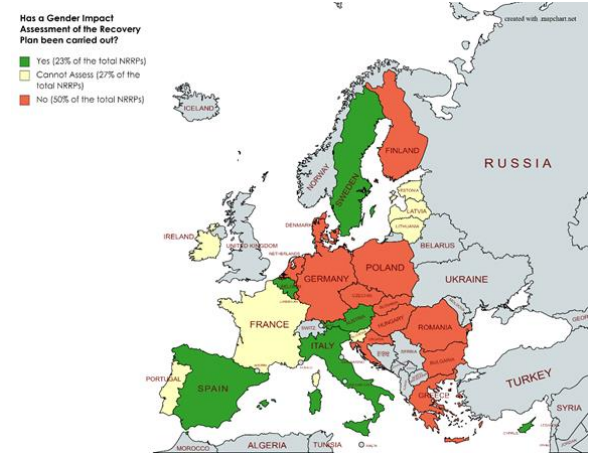
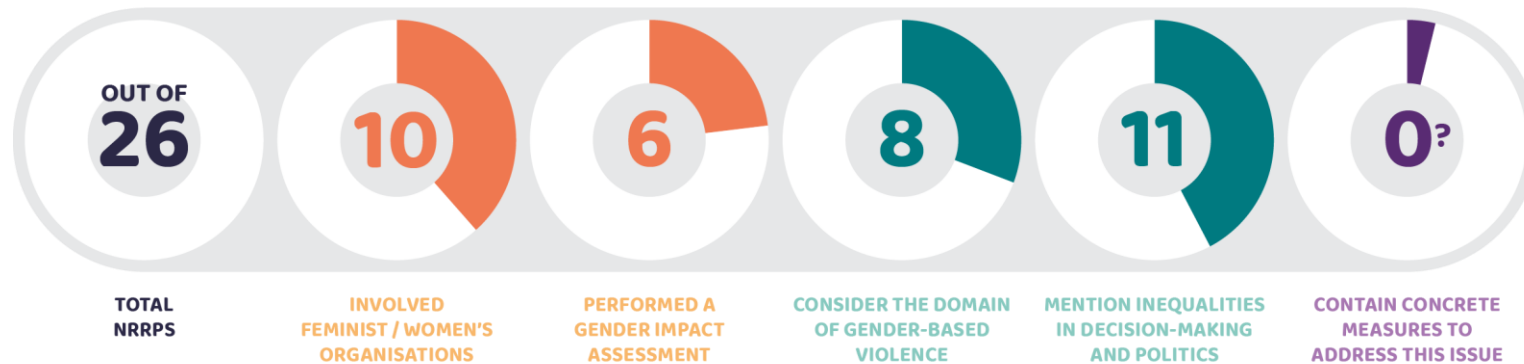
NUMBER OF PLANS MENTIONING EACH INEQUALITY GROUND (N=26)

Figure 1: The presence of inequality grounds in the different NRRPs.



Gender mainstreaming

NRRPs: EXCLUDING WOMEN FROM POLICY DESIGN



Gender+ issues are included superficially at the level of general reflections or descriptions of a given context.

No link to concrete measures, monitoring or evaluation.

Decision-making

Lack of women in decision-making in policy responses to the crisis

Low level of involvement of women's NGOs

Little inclusion of feminist, migrant, and LGBTQI+ organisations in the process of designing policy responses to the crisis

Exclusion of women throughout the policymaking process



Global research results

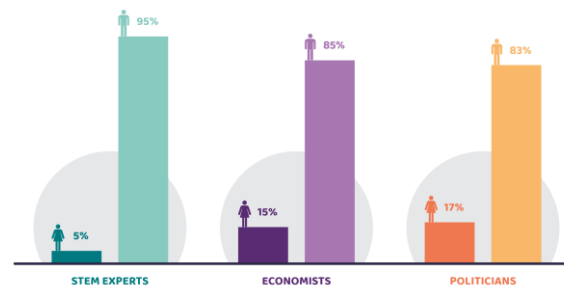
The gender composition of 115 expert and decision-making Covid-19 task forces from 87 countries:

- 85% of groups mainly included men
- 11% of groups mainly included women
- 4% of the groups had gender parity

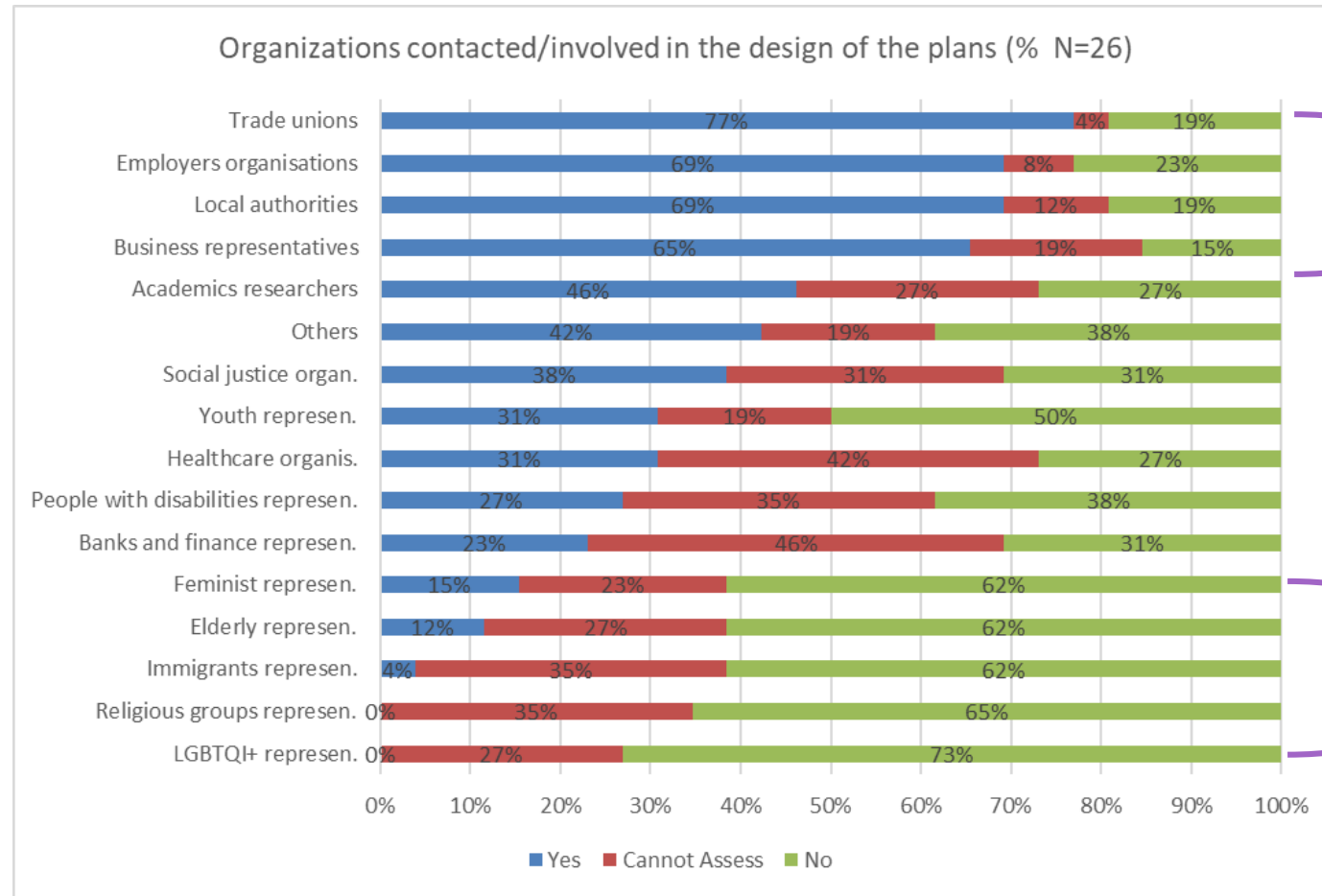
ANALYSIS OF GENDER COMPOSITION



WOMEN IN THE MEDIA



Stakeholder involvement



production, labour, and economic sectors are those more often present

These groups are almost absent in the majority of the plans

Economy

GENDER EQUALITY & ECONOMIC IMPACT

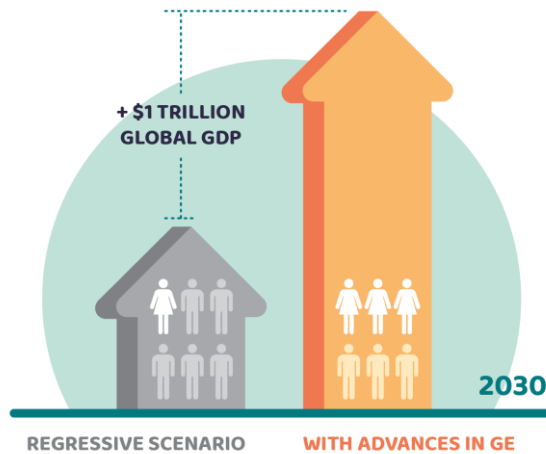


Figure 1: Global GDP cost by 2030 of a lack of intervention on the pandemic and its economic fallout's regressive effect on gender equality and employment

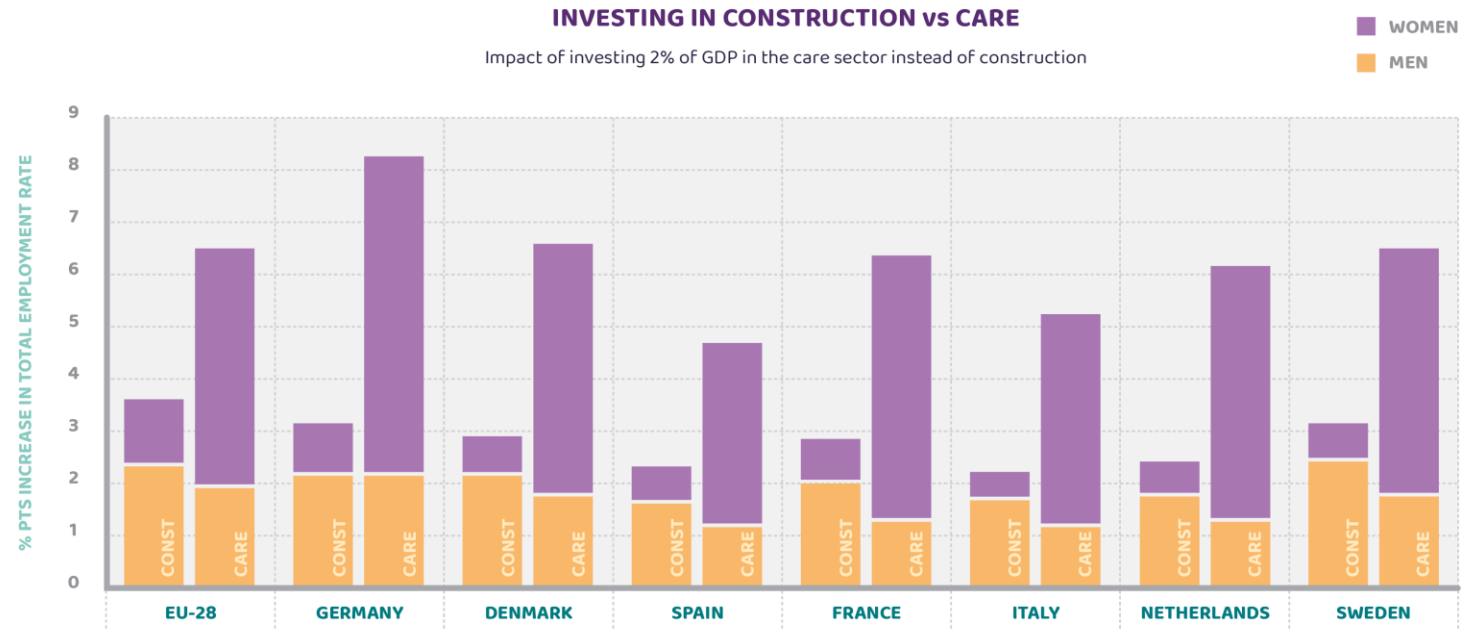


Figure 1: How investments in the care sector vs the construction sector influence the employment rate of men and women (based on Klatzer & Rinaldi 2020²)

Thank you for your attention



RESISTIRÉ

<https://resistire-project.eu>

Twitter:
[@resistire_eu](https://twitter.com/resistire_eu)

LinkedIn:
Resistiré